

# Avionics

## ALT-8000

FMCW/ Pulse Radio Altimeter Flightline Test Set

**AEROFLEX**  
A passion for performance.



Versatile time saving portable test set for testing installed FMCW and Pulse Radio Altimeters

- Tests FMCW radio altimeters including CDF types
- Tests pulse radio altimeters (non-pulse compression types)
- Direct-connect to UUTT/R or to installed system via antenna couplers
- Ratio-metric RF loop test allows TX, RX, antenna or feeder faults to be identified
- Multi-channel operation (via additional test sets)
- Programmable multi-leg climb/descend profiles
- Large touch-screen display with simple user interface
- Remote control interface USB/LAN
- Lightweight and compact <10 lbs. (4.5 kg)
- Battery 4 hours plus duration

### ALT-8000

The ALT-8000 Radio Altimeter Flightline Test Set may be quickly connected to the radio altimeter installation via two antenna couplers. RF simulation of radio altitude from -20 ft. to 50,000 ft. ( $\pm 1.5$  ft. accuracy) is provided, and altitude rate may be set to provide a smooth ramping altitude simulation to verify decision heights and altitude trips for auto-land systems and altitude data feed to EGPWS.

The ALT-8000 is designed to be software upgradable.



### General

The user interface is a Windows-based application that provides various screens for control of the test set and display of parametric measurements including: TX power, TX frequency (center), sweep rate, TX pulse width (pulse systems).

For the very latest specifications visit [www.aeroflex.com](http://www.aeroflex.com)

P r e l i m i n a r y

## Simulation

RF level may be set manually for specific receiver sensitivity measurement or auto RF level mode sets an RF level based on TX power – height path loss – scattering loss. This ensures that the test environment replicates the actual airborne conditions, verifying T/R loop gain and allowing antenna bonding issues (TX-RX cross leakage) to be identified. An additional level offset figure may be set to ensure an altitude sweep passes with a predetermined gain margin.

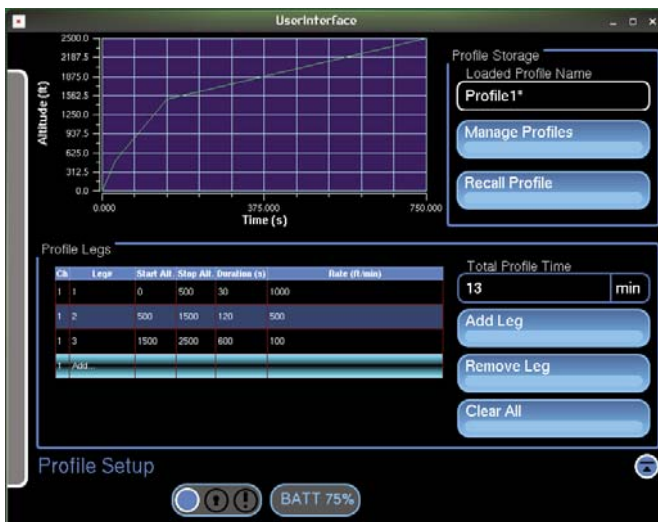
Simulated static altitude may be set by the user and manually incremented or decremented.



## Profiles

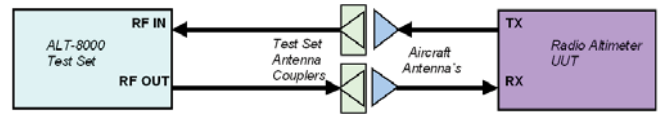
Profiles are used to control dynamic altitude simulations.

The profile screen allows the user to create, save, recall or delete named profiles. Each profile is comprised of individual legs. Start, stop altitudes and rates are definable for each leg. A profile can then be executed to simulate a complete landing approach including flare out or a take-off and departure.



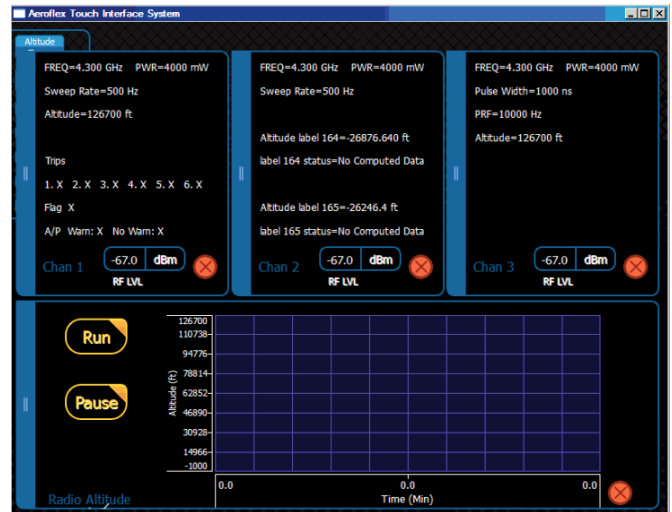
## RF Coupling

The supplied antenna couplers allow the radio altitude system to be quickly verified without access being required to test ports on the UUT LRU. Direct-connection to the T/R unit is also possible.



## Multi-Channel Operation

Up to three test sets may be linked via an altitude sync line for executing 2 or 3 channel coordinated altitude simulation for auto-land system testing.



## Test Setup

The test setup screen allows system, user and RF connection parameters to be set by the user, including: type, UUT detect mode, level mode, connection type, AID, RF cable loss and altitude offset.



## GENERAL SPECIFICATIONS

---

### USER INTERFACE

---

#### Display

12" Color LCD, sunlight readable with back light

#### Controls

Touch screen

### ANTENNA COUPLER

---

#### Antenna Couplers

TX and RX coupler

#### Loss Compensation

0 to 20 dB

### TX/RX DIRECT CONNECTION PORTS

---

#### Impedance

50  $\Omega$

#### SWR

1.3:1 maximum

#### Connector

TNC x 2 (single TX/RX channel)

### RECEIVER

---

#### RF Input Frequency

##### Range

4.10 to 4.50 GHz

#### FMCW/CDF FMCW

##### Frequency Measurement

##### Range

4.10 to 4.50 GHz

##### Accuracy

$\pm 5$  MHz

#### RF TX Power Input Tracking

##### Range

10 mW (+10 dBm) to 4 W (+36 dBm)

#### RF TX Power Measurement

##### Range

1 mW (0 dBm) to 4 W (+36 dBm)

##### Accuracy

$\pm 1$  dB

#### FM Sweep Rate Measurement

##### Range

0 to 500 Hz

##### Accuracy

$\pm 1$  Hz

#### FM Deviation

##### Range

0 to 200 MHz

### PULSE

#### Frequency Measurement

##### Range

4.10 to 4.50 GHz

##### Accuracy

$\pm 20$  MHz

#### HRRR TX Power Measurement

##### Range

1 W to 300 W peak

#### TX Pulse Width Measurement

##### Range

20 ns to 1  $\mu$ s

#### TX Pulse PRF Measurement

##### Range

0 to 20 KHz

### GENERATOR

---

#### Linear Altitude Simulation

##### Range

-20 to at least 50,000 ft.

##### Resolution

1 ft. increments

##### Accuracy

$\pm 1.5$  ft. or 2% RMS (whichever is greater)

#### Linear Altitude Rate

##### Range

1 to 10,000 fpm

##### Resolution

1 ft. increments

#### Test Cable (Automatic Compensation)

##### Test Cable length

1 to 100 ft.

##### Test Cable Loss

up to 5 dB

#### AID (Direct Connect)

##### Fixed Selectable

20, 40, 57 or 80 ft.

##### User Entered

0 to 100 ft.

##### Offset (Coupler Connect)

0 to 100 ft.

## RF Level

### Manual Mode

#### Range

0 to -90 dBm

#### Accuracy

±1 dB

### Auto Mode

TX Power – Height path loss- Scattering loss- Offset

### RF Level Offset (auto mode)

0 to 10 dB

### RF Path Loss Simulation

0 to 50,000 ft.

### Frequency Stability

±1 ppm

## ENVIRONMENTAL

---

### Test Set Certifications

#### Operational Temperature

-20° ≤ T ≤ 55°C

#### Storage Temperature

-30° ≤ T ≤ 71°C

#### Operational Humidity

MIL-PRF-28800F Class 2

#### Storage Humidity

MIL-PRF-28800F Class 2

#### Altitude

≤10,000 meters

#### Vibration Limits

MIL-PRF-28800F Class 2

#### Shock, Functional

MIL-PRF-28800F Class 2

#### Transit Drop

MIL-PRF-28800F Class 2

#### Drp Proof

MIL-PRF-28800F Class 2

#### Dust

MIL-PRF-28800F Class 2

#### Salt

MIL-PRF-28800F Class 2

#### Explosive Atmosphere

MIL-STD-810F Method 511.4, Procedure 1

#### Safety Compliance

UL-61010:2001

CSA 22.2 No 1010.1

WEEE

ROHS

EMC

## Emissions

MIL-PRF28800F Class 2

EN 61326:1998 Class A

EN 61000-3-2

EN 61000-3-3

## Immunity

MIL-PRF28800F Class 2

EN 61326:1998 Class A

## External AC-DC Converter Certifications

### Safety Compliance

UL 1950 DS

CSA 22.2 No. 234

VDE EN 60 950

### EMI/RFI Compliance

FCC Docket 20780 Curve "B"

EMC EN 61326

### Transit Case Certifications

#### Drop Test

FED-STD-101C Method 5007.1

Paragraph 6.3, Procedure A, Level A

#### Falling Dart Impact

ATA 300 Category I

#### Vibration, Loose Cargo

FED-STD-101C Method 5019

#### Vibration, Sweep

ATA 300 Category I

#### Simulated Rainfall

MIL-STD-810F Method 506.4

#### Procedure II of 4.1.2

FED-STD-101C Method 5009.1 Sec 6.7.1

#### Immersion

MIL-STD-810F Method 512.4

## ENVIRONMENTAL (SUPPLIED EXTERNAL AC TO DC CONVERTER)

---

### Use

Indoors

### Altitude

≤10,000 meters

### Operating Temperature

5° to 40°C

### Storage Temperature

-20° to 71°C

## **PHYSICAL CHARACTERISTICS**

---

### **DIMENSIONS**

#### **Height**

10.63 inches (27.0 cm)

#### **Width**

13.97 inches (35.5 cm)

#### **Depth**

3.425 inches (8.7 cm)

#### **Weight (Test set only)**

<10 lbs. (4.5 kg)

## **VERSIONS AND ACCESSORIES**

---

<b>Ordering Number</b>	<b>Description</b>
87340	ALT-8000 Radio Altimeter Test Set

### **Standard Accessories**

Transit case (qty 2)

AC-DC converter

Antenna coupler (qty 2)

Antenna pole (qty 2)

Low loss RF coax cable 20 ft. (qty 2)

TNC-TNC adapter

1 ft. jumper coax

### **Optional Accessories**

87717 Low loss RF coax cable 100 ft. (qty 2)

87040 External battery charger

86196 Spare battery pack



For the very latest specifications visit [www.aeroflex.com](http://www.aeroflex.com)

**CHINA Beijing**

Tel: [+86] (10) 6539 1166  
Fax: [+86] (10) 6539 1778

**CHINA Shanghai**

Tel: [+86] (21) 5109 5128  
Fax: [+86] (21) 5150 6112

**CHINA Shenzhen**

Tel: [+86] (755) 3301 9358  
Tel: [+86] (755) 3301 9356

**FINLAND**

Tel: [+358] (9) 2709 5541  
Fax: [+358] (9) 804 2441

**FRANCE**

Tel: [+33] 1 60 79 96 00  
Fax: [+33] 1 60 77 69 22

**GERMANY**

Tel: [+49] 8131 2926-0  
Fax: [+49] 8131 2926-130

**HONG KONG**

Tel: [+852] 2832 7988  
Fax: [+852] 2834 5364

**INDIA**

Tel: [+91] 80 [4] 115 4501  
Fax: [+91] 80 [4] 115 4502

**JAPAN**

Tel: [+81] (3) 3500 5591  
Fax: [+81] (3) 3500 5592

**KOREA**

Tel: [+82] (2) 3424 2719  
Fax: [+82] (2) 3424 8620

**SCANDINAVIA**

Tel: [+45] 9614 0045  
Fax: [+45] 9614 0047

**SINGAPORE**

Tel: [+65] 6873 0991  
Fax: [+65] 6873 0992

**UK Stevenage**

Tel: [+44] (0) 1438 742200  
Fax: [+44] (0) 1438 727601  
Freephone: 0800 282388

**USA**

Tel: [+1] (316) 522 4981  
Fax: [+1] (316) 522 1360  
Toll Free: 800 835 2352

As we are always seeking to improve our products, the information in this document gives only a general indication of the product capacity, performance and suitability, none of which shall form part of any contract. We reserve the right to make design changes without notice. All trademarks are acknowledged. Parent company Aeroflex, Inc. ©Aeroflex 2011.

[www.aeroflex.com](http://www.aeroflex.com)  
[info-test@eroflex.com](mailto:info-test@eroflex.com)



Our passion for performance is defined by three attributes represented by these three icons: solution-minded, performance-driven and customer-focused.