

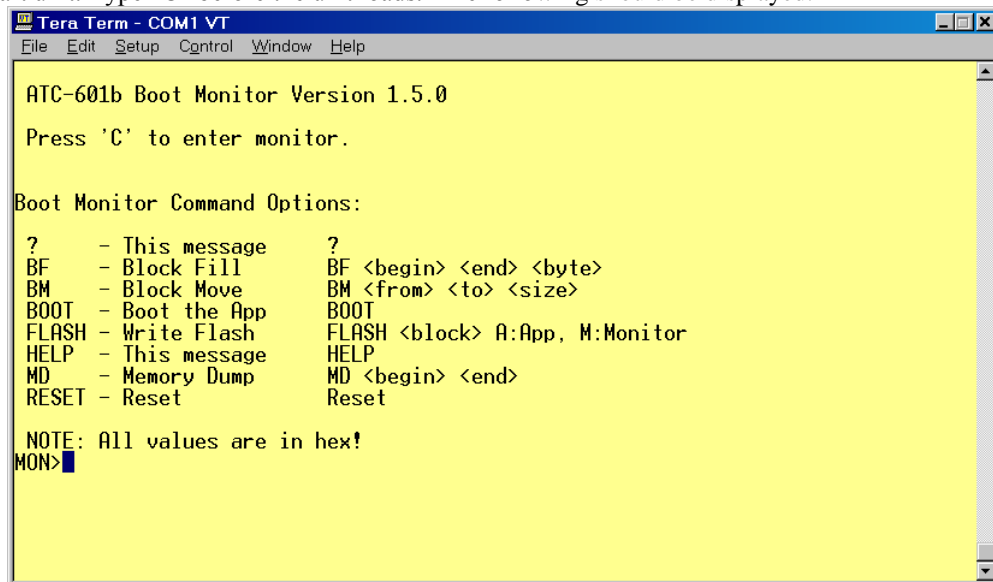
**Before loading the following application, you must setup a connection to the ATC601. An example of this setup for Tera Term can be found in the “teraterm setup.doc” document.**

#### Setup for Tera Term...

1. Setup->Serial Port...
2. Serial Port to desired port.
3. Set Baud rate to “38400”.
4. Set Data to “8 bit”.
5. Set Parity to “none”.
6. Set stop bit to “1 bit”.
7. Set flow control to “hardware”.

#### Application load procedure...

1. Connect unit to pc via rs232 cable (IFR Stock #63043).
2. Start unit. Type “C” before the unit loads. The following should be displayed.



```
Tera Term - COM1 VT
File Edit Setup Control Window Help

ATC-601b Boot Monitor Version 1.5.0

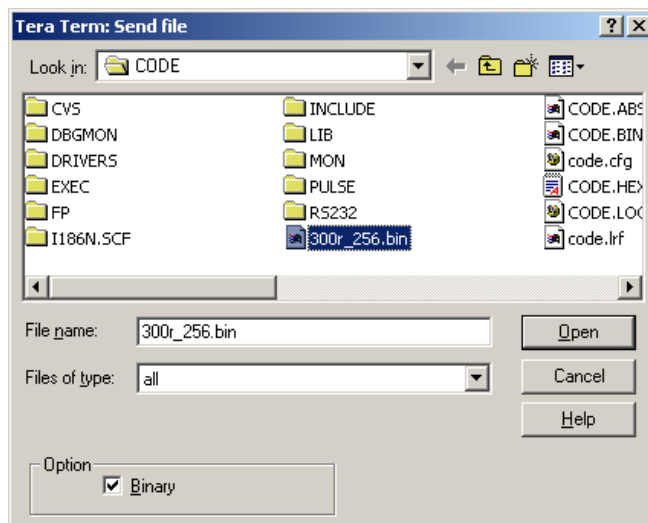
Press 'C' to enter monitor.

Boot Monitor Command Options:

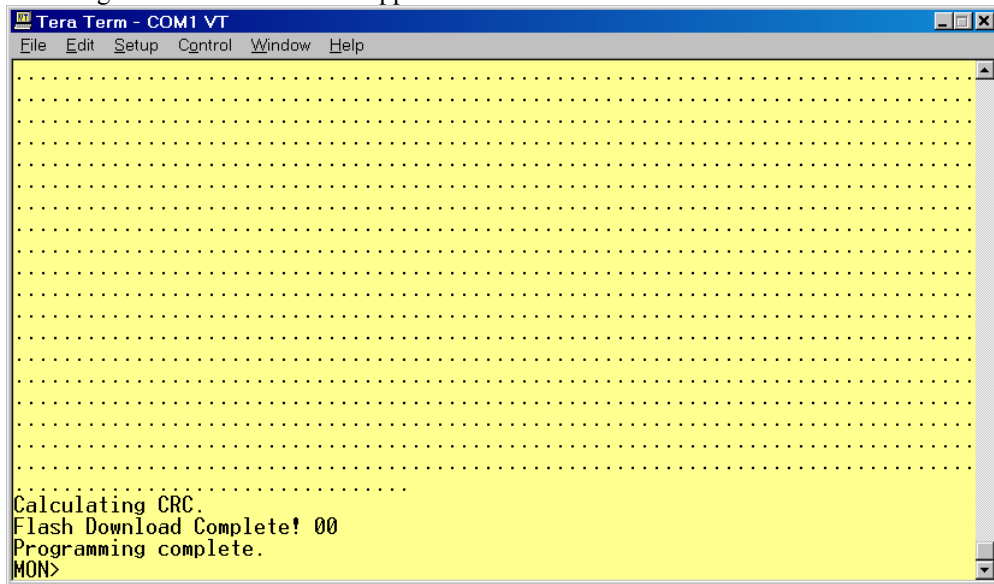
? - This message      ?
BF - Block Fill       BF <begin> <end> <byte>
BM - Block Move       BM <from> <to> <size>
BOOT - Boot the App   BOOT
FLASH - Write Flash   FLASH <block> A:App, M:Monitor
HELP - This message   HELP
MD - Memory Dump     MD <begin> <end>
RESET - Reset         Reset

NOTE: All values are in hex!
MON>
```

3. Type “flash a 1”.
4. Download application code to the unit (**NOTE: Make sure Binary is selected**).



5. The following should be displayed after download. Note: It may take a minute or two before the “Calculating CRC” and other words appear.



6. The new application should now be loaded.
7. Power off and on the unit to start the new application.