



DolphiCam is a mobile and ergonomic ultrasound camera system designed for NDT inspection of CFRP (Carbon Fiber Reinforced Plastics) creating high-resolution 2D and 3D images of suspected damage areas.

DRY COUPLING TRANSDUCER

The silicone-based 16.000 element transducer enables dry coupling on painted or shiny surfaces. Water or contact gel can be used on rougher surfaces.

SMALL CAMERA WITH ADVANCED FEATURES

DolphiCam connects to a standard Windows PC or Tablet through the USB port, and makes the system very portable and flexible. The DolphiCam software creates A-, B- and C-scan images of very high quality supporting Amplitude and Time-of-Flight modes.



By adjusting pulse and gate settings, color thresholds and other camera settings, material defects are easily identified. We also added an effective Manual Stitching Mode to ease large-area inspections. Camera settings are easily stored and retrieved for quick camera configuration.

The DolphiCam 3D viewer creates crystal-clear images of material defects, and makes it easy to perform a defect analysis and to develop optimal repair strategies. The 3D image can be zoomed, panned and rotated.

NDT FOR EXPERTS AND OPERATORS

The DolphiCam comes in two versions; DolphiCam Expert Cameras are optimized for NDT engineers and experts that want advanced features and detailed control over all camera settings.

DolphiCam Operator Cameras are perfect for inspectors that regularly performs NDT jobs but do not need advanced features, and they are used as inspector cameras in our DolphiTech TeamCenter system.

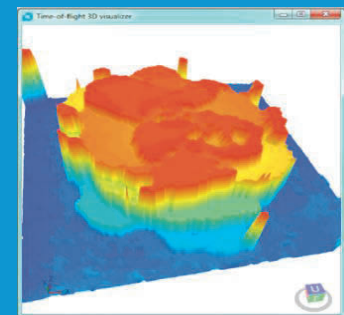
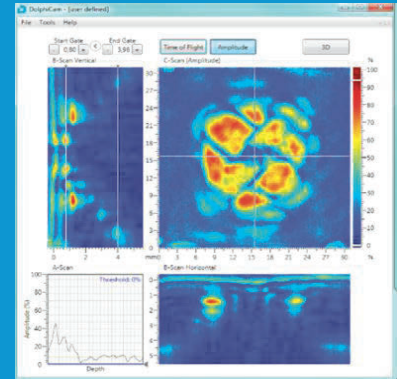
In TeamCenter, the Expert creates inspection procedures that embeds DolphiCam functionality. Field Inspectors follow the Expert guidance, performing high quality NDT, saving time and money. True scalable NDT is available today!

DOLPHICAM VARIANTS

	0-8mm CFRP	0-16mm CFRP
Expert (Full feature set)	DC-CF08-EXPERT	DC-CF16-EXPERT

Features

- High resolution images
- 16.000 transducer elements
- Dry and wet coupling
- 2D and 3D images
- A-, B-, and C-scans
- Amplitude & Time of flight
- Stitching function
- "Traffic light" color palette
- Highly configurable settings
- Compact and ergonomic
- Large internal battery
- Easily operated by non-experts
- Windows software (XP or newer, or Windows 8)



Barfield provides advanced ultrasound-based cameras for 2D and 3D identification, inspection and analysis of defects in composite materials.

www.barfieldinc.com

Barfield, Inc.
4101 N.W. 29th Street
Miami, FL 33142
T. 305-894-5400
gste@barfieldinc.com